

**ALUTECH**  
DOOR SYSTEMS

## Mounting and operation manual

### Key lock **CUTR400.10-A**

#### ENGLISH

Key lock is used for control units series **CU-TR** and applied for control signals blocking. Control voltage of control unit key lock contacts is 5 V of direct current.

Delivery set—*fig. 1*.

Control unit case is provided with a special space for key lock mounting (*fig. 2*).

Before key lock mounting into the special space of control unit, make an aperture along the contour using sharp flat screwdriver or another tool (*fig. 3*). Do it carefully, do not remove unnecessary material. After that install the key lock, put against the sealing ring with a screw-cap and firmly tighten the screws.

Connect the key lock to the special socket **LOCK** of the control unit (*fig. 4*). If the key lock is positioned opposite to the blue mark, so key lock contact is normally closed; received control signals will not be released, and unit control display will be indicating '**L**' (please, check out control unit manual).

When you have installed the required position of the key lock, close the screw-cap of the key lock.

#### **Made in China**

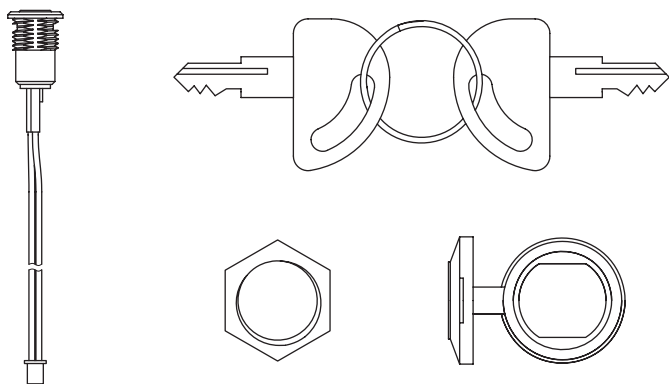
#### **Importer to the EU/Authorised representative of the Manufacturer:**

ALUTECH Systems s.r.o., 348 02, Czech Republic, Bor u Tachova, CTPark Bor, Nova Hospoda 19, D5-EXIT 128.

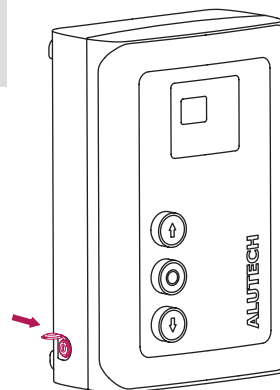
Phone/fax: + 420 374 6340 01

e-mail: [info@cz.alutech-group.com](mailto:info@cz.alutech-group.com)

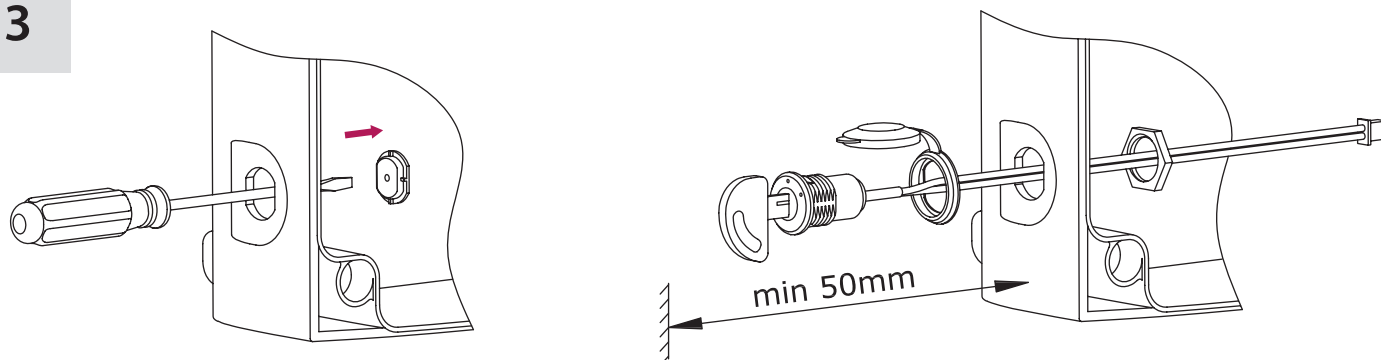
1



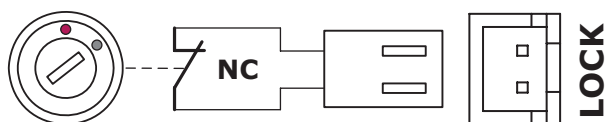
2



3



4



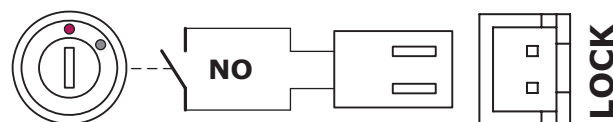
**RU:** заблокировано управление

**EN:** control is blocked

**DE:** Steuerung gesperrt

**FR:** commande bloquée

**UA:** заблоковане керування



**RU:** разрешено управление

**EN:** control is enabled

**DE:** Steuerung erlaubt

**FR:** commande autorisée

**UA:** дозволене керування